

The Gibbon Group logo features the words "gibbon" and "group" stacked vertically in a lowercase, sans-serif font. A thin orange line curves around the right side of the text, starting from the top left and ending at the bottom right.

gibbon
group

modulyss
ranges

gibbongroup.com.au/all-ranges

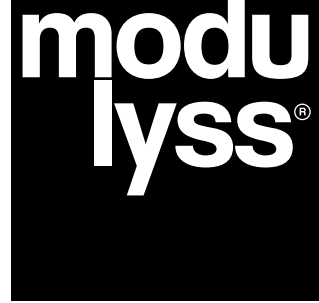
ARCHITECTURAL | FLOORING SOLUTIONS

Supporting the
collective creating
inspiring spaces

People.Product.Connection.

modulyss carpet **care** instruction guidebook

Within Australia **1300 245 404**



CLEANING RECOMMENDATIONS

Need a hand?

modulyss® prides itself in making quality carpet tiles that meet the strictest European standards, EN1307. Our carpet tiles are known for their strong character and their optimal retention of colour and appearance. These properties not only guarantee a long life, but also make the cleaning of the carpet tiles easier and faster, which in turns means lower maintenance costs.

To help you enjoy your modulyss® carpet as long as possible, we have compiled the following **Cleaning Recommendations**. Retaining the beauty of your carpet requires a scheduled approach. The good news? Smart and regular maintenance repays itself many times over.

PREVENTATIVE MEASURES

Prepare & prevent

The lasting and beautiful character of a modulyss® carpet tile is determined by the right choice of the quality and colour of the tile. In rooms with intensive foot traffic, it is best to opt for darker colours. The carpet has a greater dirt-concealing capacity in such a case.

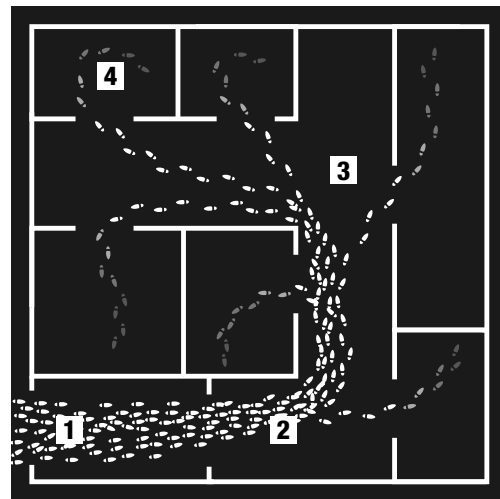
Clean-off zone

The protection of an interior starts with an optimal protection of the entrance. **85% of the dirt is brought in by shoes**, and that is why we recommend installing an efficient and sufficiently long clean-off zone (minimum 9 metres) where an entrance from the outside or from heavily soiled areas is possible.

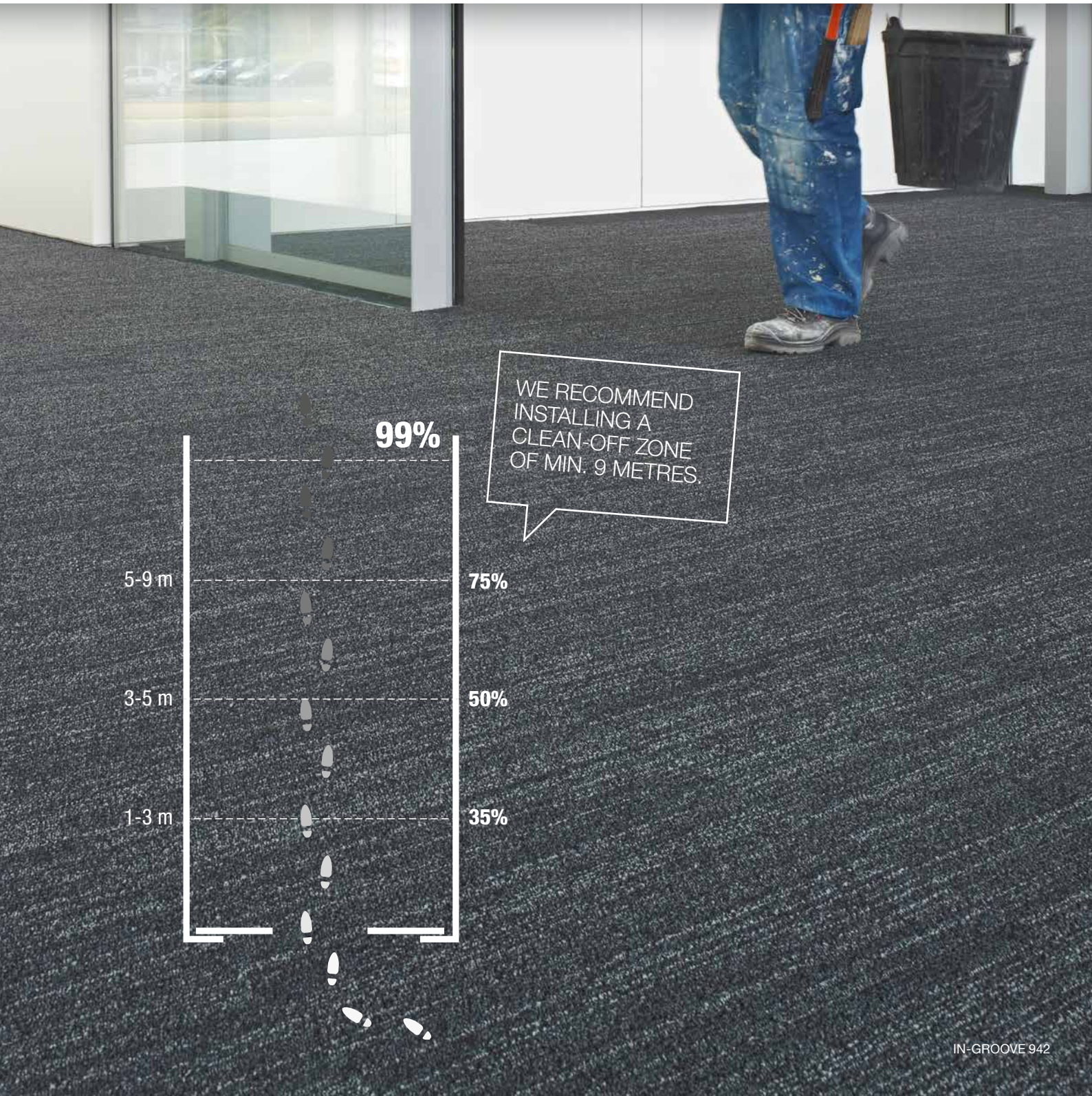
We recommend you to opt for a carpet tile with a darker colour and an irregular pattern. In-groove carpet tiles, made of sturdy, soil-resistant yarn, are ideally suited for clean-off zones.

Types of traffic areas

An (office) space can be divided in 4 traffic areas:



- 1 Clean-off zone
- 2 Heavily intensive traffic area
- 3 Intensive traffic area
- 4 Normal traffic area



A CLEAN PLACE
MAKES
A HAPPY SPACE.

ROUTINE CLEANING

Daily maintenance

Vacuum cleaning using a brush vacuum cleaner constitutes the basis of daily maintenance. It can remove about 80% of the dirt from the carpet. Furthermore, a brush vacuum cleaner helps to retain the appearance of a carpet tile's pile. Do not forget to regularly replace the vacuum cleaner bag.

The vacuuming frequency is determined by the foot traffic and the soiling of the carpet:

- **Heavily intensive traffic:** 1 x per day
- **Intensive traffic:** 2 to 3 x per week
- **Normal traffic:** 1 x per week

Recommended machinery: see page 13.

CAUTION: using horizontal rotating brushes to clean the carpet might affect the appearance of the pile of the carpet tiles.

SPOT CLEANING

Spot removal

We recommend that marks be removed from the carpet immediately, as old spots are far more difficult to clean.

Take the following tips into account:

- remove solids using a spoon or spatula;
- remove liquids using a clean white cloth or blotting paper;
- always treat the mark using a clean damp cloth;
- work from the edges towards the middle of the mark, with the pile;
- dab the mark, but never rub it.

When removing marks, carefully follow the instructions mentioned on the cleaning products. Always use products that are pH neutral and avoid products with chlorine (e.g. bleach) or chemically aggressive oxidants. We recommend pre-testing an inconspicuous area for colour fastness and material durability.

Call in an expert for dried or hardened spots, who can prevent the carpet from getting damaged by using the right products.

Removing water-based marks

Sprinkle the agent directly on the carpet. Do not use the agent if the carpet leaves a coloured mark on the cloth. Subsequently, use the dry cleaning agent as follows:

- 1** After removing a semi-hardened or hardened mark, dab at the mark with a clean damp cloth. Then remove the remaining soiling with a small quantity of a dry cleaning agent. Sprinkle the cleaner over the mark and brush it in carefully with a hand brush.
- 2** Let the area dry for around 15 to 30 minutes and brush the cleaner in again. If the cleaner appears to be sticking to the carpet, brush carefully and vacuum the affected area. If necessary, repeat the process.

Removing oil-based marks

To remove oil-based marks such as paint, fat, tar, asphalt, etc., use specialist carpet stain removers. Sprinkle the remover on a clean, white cloth and press it onto the carpet. Do not use the remover if the carpet leaves a coloured mark on the cloth. Subsequently use the stain remover as follows:

- 1** Wipe carefully inwards from the outside edge of the mark. Repeat the procedure until the mark has been removed. Following chemical treatment, rinse the mark with water to remove cleaner residue. Protect the cleaned part until the carpet is completely dry.
- 2** Afterwards treat with a dry cleaner as described under 'removing water-based marks'.

Removing dried-on and stubborn marks

Marks that are hard to remove like rust, varnish, coffee, chewing gum and soft drinks require specialist treatment

In case the stubborn mark cannot be removed, call in an expert who can use the right products to avoid damaging the carpet.

PROLONG YOUR
CARPET'S LIFE-
CYCLE THROUGH
SPECIALIST
CLEANING.

SPECIALISED MAINTENANCE

The goal of specialised maintenance is to keep the carpet clean and maintain a consistent appearance level. The primary focus is on frequent low-moisture pile lifting and the removal of sticky residues or stubborn marks that would otherwise trap soil in the carpet fibers.

Annual cleaning

During an annual cleaning, once the carpet tiles have been vacuumed and the spots removed, the fibres are cleaned thoroughly by means of an injection-extraction method whereby hot water under pressure is injected in the tile. The dirt is loosened and extracted immediately. When clear water is obtained during the extraction, the dirt has been removed from the carpet. Thanks to this method, carpet tiles can be restored to their original state. We advise to have this method applied by a specialised firm.

The frequency of the thorough cleaning depends on the use of the room:

Heavy use:	2 x per year
Normal use:	1 x per year
Moderate use:	1 x per 4 years