



gibbon
group

modulyss
ranges

[gibbongroup.com.au /all-ranges](http://gibbongroup.com.au/all-ranges)

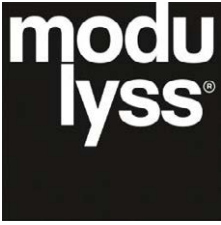
ARCHITECTURAL | FLOORING SOLUTIONS

Supporting the
collective creating
inspiring spaces

People.Product.Connection.

modulyss carpet tile installation

Within Australia **1300 245 404**



Installation of carpet tiles

modulyss® carpet tiles are available in different colours, structures and designs. The creative possibilities are consequently limitless. For optimal results, however, a correct installation of the carpet tiles is an absolute must. So follow the installation instructions carefully.

One of the most important advantages of modulyss® carpet tiles is the ease and flexibility with which they can be installed or replaced. Installing carpet tiles moreover means savings in costs thanks to the smaller cutting loss by comparison with fitted carpets or other floor covering.

01 Preparation

Packaging

A pallet comprises 20 cases. Each case contains 5 m² of carpet tiles. Place the cases on a flat surface in the room where the carpet is to be installed. Open the cases on the top or on the side and leave the tiles for at least 24 hours to get acclimatised.

Inspection

The quality, colour and batch number are mentioned on each case. This information, together with the arrow that indicates the pile direction can be found on the backside of each carpet tile. For an even result, it is very important to use tiles from the same batch in one and the same room. You must therefore always check the material delivered before proceeding to install the tiles.

Environmental conditions

Whilst waiting to install them, store the tiles in a closed room where the temperature is between 15°C and 25°C and the relative humidity ± 60 %.

Substrate

modulyss® carpet tiles can be installed on every floor provided that it is dry, clean, greaseproof, sturdy and even. Residues of previous floor covering must be removed.

The substrate must be stabilised and dry and must comply with the requirements of the national construction standards and requirements. The temperature of the substrate must be between 10°C and 25°C, and the humidity may not exceed 5%.

Underfloor heating

In a room with underfloor heating, the underfloor heating system must be switched off at least 24 hours before the carpet is installed. It can then be gradually brought back up to temperature ($\pm 5^{\circ}\text{C}/\text{day}$), 48 hours after the carpet tiles are installed. Make sure that the heating circuit is completely waterproof.

02 Installation of the carpet tiles

Installation

All carpet tiles are made so as to be installed separately.

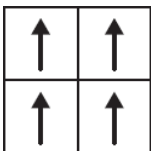
No permanent gluing is needed to install the carpet tiles, so we recommend that an anti-slip or semi-permanent glue be used. These types of glue have a lasting, non-hardening adhesive effect once they dry.

Make sure that the carpet tiles are installed tightly against each other; the backing must fit closely and the piles may not be squeezed. If the carpet tiles are pressed too tightly, lumps and warps can occur.

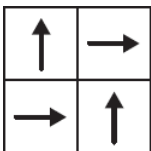
It is best to start from the door opening when installing the floor. A complete tile is installed at the door opening, continuing further until the middle of the room, in parallel with the main wall. This midpoint serves as the point of departure for the subsequent step-by-step installation of the tiles.

Pile direction

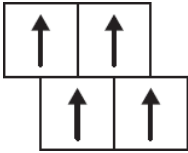
An arrow on the backside of the tile indicates the pile direction, and can be used to install the product in different ways:



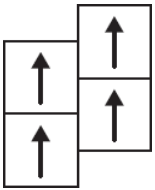
One way
The carpet tiles are installed in the same direction to create a uniform floor covering



Draughtboard
The arrow on the back side of the carpet tiles is alternately turned 90°



Half brick
Each tile is horizontally shifted half a row so that 4 corner points never coincide.



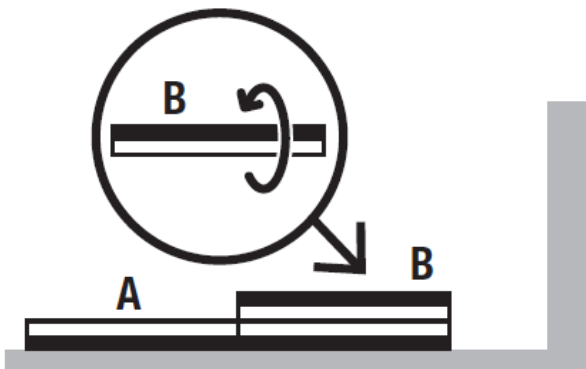
Ashlar
Each tile is horizontally shifted half a row so that 4 corner points never coincide.

The technical data sheet indicates which installation possibilities apply for the product concerned.

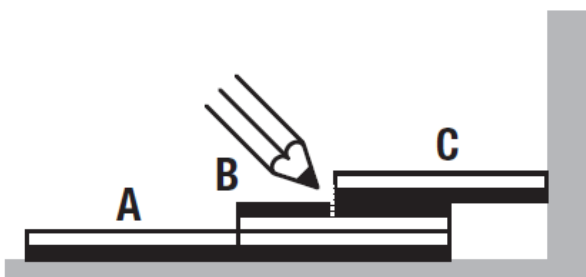
Cutting the tiles

To finish the room, the carpet tiles will in most cases have to be cut to measure by means of a Stanley cutter knife. Carpet tiles are cut on the backing.

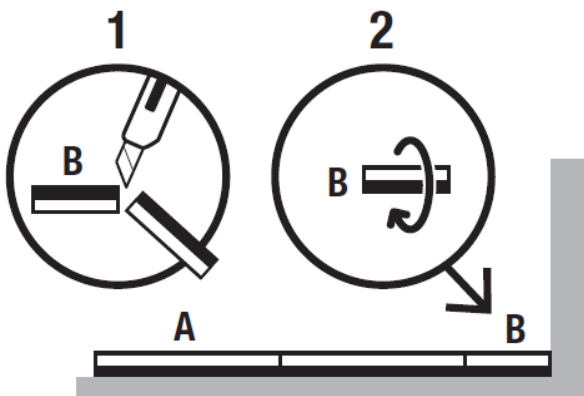
Place Tile B to be cut precisely on Tile A. Use an extra tile (C).



Push the latter up to the wall over Tile B.



Now indicate on Tile B where you have to cut. Finally, install the cut Tile B in the space between the wall and Tile A.



Floor protection after installation

Make sure that the floor covering just installed is sufficiently protected if the room still has to be used by other workers. So do not place any furniture on the floor during the installation. Move heavy furniture on hardboard plates to prevent the carpet from getting damaged.

03 Conditions

A maximum of 100 m² can be installed in advance for each installation for assessment purposes. If a party concerned should report any deviation from the original specifications and/or a production error is detected, modulyss[®] must be informed before proceeding with the further installation of the carpet tiles.

The modulyss[®] guarantee may no longer apply if the installation instructions are not followed. modulyss[®] shall not be held liable for errors resulting from unprofessional installation. The guarantee shall apply only if the carpet is used under normal circumstances (correct installation and maintenance).



RECOMMENDED ADHESIVE FOR INSTALLATION OF MODULYSS CARPET TILES

PLEASE NOTE THE FOLLOWING ADHESIVE IS RECOMMENDED FOR INSTALLATION OF MODULYSS CARPET TILES

Modu-Tak Pressure Sensitive Adhesive – 15LTR
Low VOC adhesive with Antimicrobial

(CONSUMPTION – Please see Data Sheet)

AVAILABLE FROM GIBBON GROUP PTY LTD

The logo for Gibbon Group, consisting of the words "gibbon" and "group" in a lowercase, sans-serif font. "gibbon" is in black and "group" is in grey. A thick orange curved line arches over the text from the left side.

gibbon
group

ARCHITECTURAL | FLOORING SOLUTIONS

Within Australia **1300 245 404**

Modu-Tak

Pressure Sensitive Adhesive

DESCRIPTION:

Modu-Tak is a pressure sensitive type adhesive that exhibits high levels of resistance to concrete substrates that exhibit high levels of alkalinity—up to pH 12.

DIRECTIONS FOR USE:

Floors must be clean, dry, sound and smooth in accordance with AS 2455.1.2007 & AS 2455.2.2007 and free from paint, dirt, dust and any other deleterious materials. When adhering to highly absorbent concrete sub floors, the use of a suitable Floor Primer is strongly recommended. **Modu-Tak** Adhesive can be applied to concrete substrates with moisture contents up to 85% relative humidity and falling when tested with In-Situ probe method. For concrete substrates with Hydrostatic Pressure we recommend a suitable 2 part epoxy membrane must be used.

APPLICATION:

Modu-Tak Adhesive should be applied with one of the following methods. A "V1" 1.6mm x 1.6mm x 1.6mm notched trowel to the sub-floor for Textured and or fibre backed carpet tiles. A long nap roller when installing smooth backed carpet tiles like PVC or Bitumen.

Allow **Modu-Tak** Adhesive film to clear. Once clear, the adhesive is in a dry tack mode and floor covering may be placed in position. Tack up time will be dependent upon room temperature, humidity, airflow and the substrate absorbency. Always ensure no contaminants come in contact with adhesive film prior to installing carpet tiles.

APPLICATION RATE:

Coverage approx. 7 – 10 m² per litre by long nap roller. Coverage approx 5m² per litre by V1 notched trowel. Complete the installation according to the AS 2455.2.2007 and floorcovering manufactures installation instructions including rolling of floorcoverings on completion.

STORAGE:

Modu-Tak Adhesive should be stored between 10°C and 30°C in well ventilated areas. Shelf life is 12 months in sealed container.

CLEAN UP:

Modu-Tak Adhesive should be cleaned off any surface and tools immediately with a well dampened cloth. Do not allow to dry. Dried adhesive on tools may be softened using a suitable solvent cleaner. Solvents cleaners are not suitable for use on floorcoverings or finished surfaces.

Note: Always carry out your own site test to confirm suitability of this product with your application. Additional information on physical properties, health hazards, storage, handling and transport is available in the Material Safety Data Sheet (MSDS), available on request.